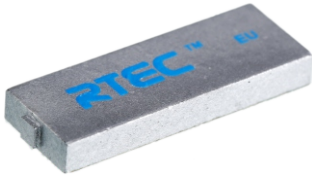


RTEC Atom™



- High value spare parts
- Crucial materials or objects
- Expensive electronic devices
- Embedded

Environmental Specifications

Operating Temperature	-30°C to +85°C
Ambient Temperature	-30°C to +150°C
IP Classification	IP68
Shock and Vibration	MIL STD 810-F
Certifications	CE approved RoHS approved ATEX/IECEX certified
Warranty	1 year

Customization Options

Encoding

Pre-encoding based on customers' specification, including EPC, User memory and other requests.

Appearance

Customized appearance design, including logo, barcode, text on the PET label etc.

Mechanical Specifications

Tag Materials	Ceramic
Surface Materials	Durable Paint
Dimensions	9 x 25 x 3.2 mm
Weight	3.6 g
Attachment	Industry grade adhesive
Color	High performance epoxy resin Customized colors are available

RF Specifications

RF Air Protocol	EPC Global Class 1 Gen2 ISO18000-6C
Operating Frequency	UHF 866-868 MHz (ETSI) UHF 902-928 MHz (FCC)
Environment Compatibility	Optimized on metal
Read Range	Up to 7 m (on metal)
Polarization	Linear
IC Type	Impinj R6-P
Memory Configuration	EPC 128bit TID 96bit User 32bit

*Read ranges indicated in this datasheet is achieved by using our standard testing methodology. Actual performance will be different if different reader hardware and output power is applied.

Order Information

Product #	RTEC2030301
Product Name	RTEC Atom ETSI
Product #	RTEC2030302
Product Name	RTEC Atom FCC



RTEC Singapore

57 Mohamed Sultan Road
#01-05 Sultan Link
Singapore 238997

RTEC China

L3 Enterprise accelerator B,
Scientific innovation District,
MianYang City
Sichuan, China 621000

